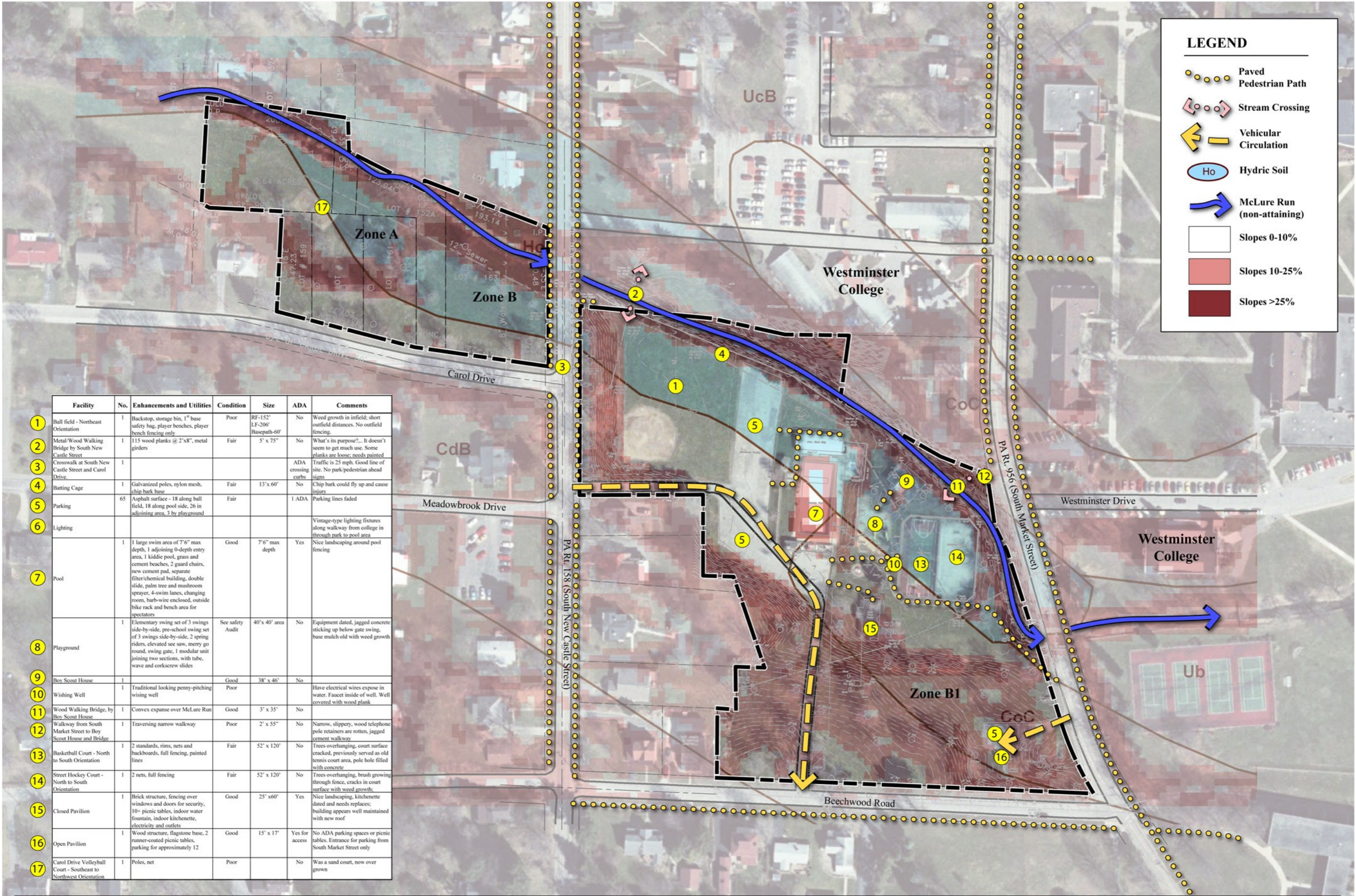


LEGEND

- Paved Pedestrian Path
- Stream Crossing
- Vehicular Circulation
- Hydric Soil
- McLure Run (non-attaining)
- Slopes 0-10%
- Slopes 10-25%
- Slopes >25%



	Facility	No.	Enhancements and Utilities	Condition	Size	ADA	Comments
1	Ball field - Northeast Orientation	1	Backstop, storage bin, 1" base safety bag, player benches, player bench fencing only	Poor	RF-152' LF-206' Basepath-60'	No	Weed growth in infield; short outfield distances. No outfield fencing.
2	Metal/Wood Walking Bridge by South New Castle Street	1	115 wood planks @ 2"x8", metal girders	Fair	5' x 75'	No	What's its purpose?... It doesn't seem to get much use. Some planks are loose; needs painted
3	Crosswalk at South New Castle Street and Carol Drive.	1				ADA crossing curbs	Traffic is 25 mph. Good line of site. No park/pedestrian ahead signs
4	Batting Cage	1	Galvanized poles, nylon mesh, chip bark base	Fair	13' x 60'	No	Chip bark could fly up and cause injury
5	Parking	65	Asphalt surface - 18 along ball field, 18 along pool side, 26 in adjoining area, 3 by playground	Fair		1 ADA	Parking lines faded
6	Lighting						Vintage-type lighting fixtures along walkway from college in through park to pool area
7	Pool	1	1 large swim area of 7'6" max depth, 1 adjoining 0-depth entry area, 1 kiddie pool, grass and cement beaches, 2 guard chairs, new cement pad, separate filter/chemical building, double slide, palm tree and mushroom sprayer, 4-swim lanes, changing room, barb-wire enclosed, outside bike rack and bench area for spectators	Good	7'6" max depth	Yes	Nice landscaping around pool fencing
8	Playground	1	Elementary swing set of 3 swings side-by-side, pre-school swing set of 3 swings side-by-side, 2 spring riders, elevated see saw, merry go round, swing gate, 1 modular unit joining two sections, with tube, wave and corkscrew slides	See safety Audit	40' x 40' area	No	Equipment dated, jagged concrete sticking up below gate swing, base mulch old with weed growth
9	Boy Scout House	1		Good	38' x 46'	No	
10	Wishing Well	1	Traditional looking penny-pitching wishing well	Poor			Have electrical wires expose in water. Faucet inside of well. Well covered with wood plank
11	Wood Walking Bridge, by Boy Scout House	1	Convex expanse over McLure Run	Good	3' x 35'	No	
12	Walkway from South Market Street to Boy Scout House and Bridge	1	Traversing narrow walkway	Poor	2' x 55'	No	Narrow, slippery, wood telephone pole retainers are rotten, jagged cement walkway
13	Basketball Court - North to South Orientation	1	2 standards, rims, nets and backboards, full fencing, painted lines	Fair	52' x 120'	No	Trees overhanging, court surface cracked, previously served as old tennis court area, pole hole filled with concrete
14	Street Hockey Court - North to South Orientation	1	2 nets, full fencing	Fair	52' x 120'	No	Trees overhanging, brush growing through fence, cracks in court surface with weed growth
15	Closed Pavilion	1	Brick structure, fencing over windows and doors for security, 10+ picnic tables, indoor water fountain, indoor kitchenette, electricity and outlets	Good	25' x 60'	Yes	Nice landscaping, kitchenette dated and needs replaces; building appears well maintained with new roof
16	Open Pavilion	1	Wood structure, flagstone base, 2 runner-coated picnic tables, parking for approximately 12	Good	15' x 17'	Yes for access	No ADA parking spaces or picnic tables. Entrance for parking from South Market Street only
17	Carol Drive Volleyball Court - Southeast to Northwest Orientation	1	Poles, net	Poor		No	Was a sand court, now over grown

New Wilmington Borough Community Park - Site Analysis
 New Wilmington Borough
 Lawrence County, Pennsylvania

NOTES:
 Base Map Information compiled from surveys of property boundaries and site features completed by Frank B. Taylor Engineering completed March 29, 2007 and September 20, 2005.
 Locations of all site features and facilities are approximate. Pashek Associates makes no claims to the accuracy of utility locations or other facilities.

North

Scale: 1" = 50' Contour Interval: 5'

PASHEK ASSOCIATES
 A PENNSYLVANIA CORPORATION